



Polymer Clay Necklace and Ring

Using an Extruder

By Lia Spragg

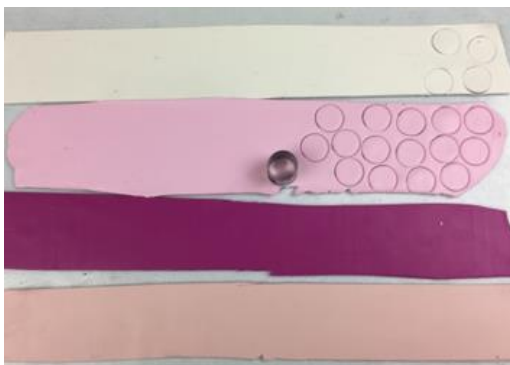
Materials and Tools:

<ul style="list-style-type: none"> ✓ 4 different colours of Polymer clay (1/4 pack each) - for all pieces (use less if doing just one of the piece) <i>Note: I used Fimo colours: 205, 61, 21 and white</i> ✓ Tissue blade and cutters ✓ Pasta Machine ✓ Polymer Clay Extruder ✓ Pendant Bail glue on 	<ul style="list-style-type: none"> ✓ Wet Wipes ✓ Tooth pick / cocktail sticks ✓ Baking tray, cardboard kitchen or toilet roll tube ✓ Elastic string 1mm ✓ Jewellery findings / metal beads / Adjustable ring base ✓ Organza Silk ribbon ✓ Polymer clay glaze ✓ E 6000 glue
--	--

Cane:

Roll all colours (after well-conditioned) one by one through the pasta machine (middle thickness). (1/4 of each colour)

Using a small circle cutter (the same diameter as the extruder) or use the end of extruder to cut small circles in all polymer clay colours.



Tutorial is covered by Copyright

Not allowed to be published, copied or sold without express permission of Lia Spragg

Make a tower with all colours randomly.

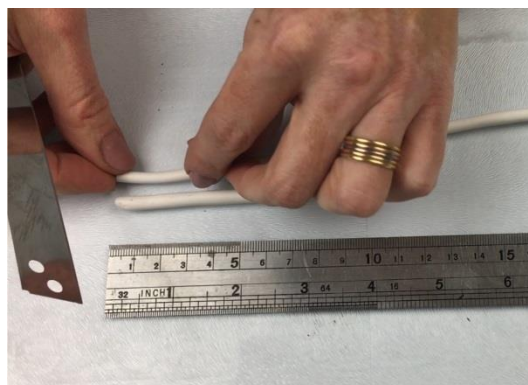
Insert the tower into the extruder and turn the handle until you the clay comes out the other end.



Cut the extruded clay strips into equal sizes about 10cm (8") and add them together.



Roll a small sausage of white polymer clay and fit into the spaces to make the cane. The gently press



Tutorial is covered by Copyright
Not allowed to be published, copied or sold without express permission of Lia Spragg



Cut it in half and add them together to form one piece. Then cut in half again and add both parts together.



Using the tissue blade cut thin slices of the cane and place it into a thin piece of polymer clay/any colour to make the pendant. Use the acrylic roller and get it flat and smooth.



Tutorial is covered by Copyright
Not allowed to be published, copied or sold without express permission of Lia Spragg



Use a cutter for the shape of your pendant and ring and place them on your baking tray. Preferably use parchment paper or foil underneath and cover with foil when baking. See baking instructions on the pack of your clay. I generally bake for 45 to 1 hour at 275°



Assembling the necklace and ring



If you want your pendant to have a gloss finish simply apply a thin layer of varnish and let it dry before assembling. Glue the pendant bail behind the pendant and finish the ring applying the same glue. Let it dry and it is ready to wear it!

I hope you enjoyed this tutorial. If you have any questions, you can contact me on my blog at <https://madeathomecrafts.com/contact-us/> or my Facebook page at <https://www.facebook.com/madeathomecrafts>

Tutorial is covered by Copyright
Not allowed to be published, copied or sold without express permission of Lia Spragg

